

# HIGHWAYS ENGLAND AREA 3 ROAD SIGN RETRO-REFLECTIVITY AND ASSET SURVEY

➤ **Project:**  
Area 3 Survey

➤ **Location:**  
Central Southern England

➤ **Client:**  
Kier PLC.

➤ **Completion Date:**  
August 2018.

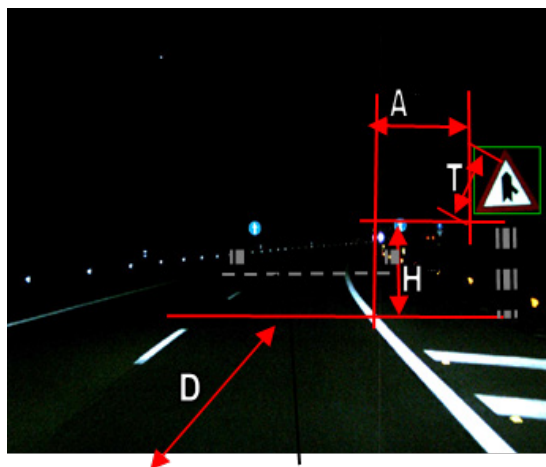
## SERVICES

 Asset Surveying

## OVERVIEW

Kier are the managing agent contractor for Area 3 responsible for Network management and maintenance on behalf of Highways England.

Within their contract they are responsible for a range of asset management surveys, including the reflectivity performance / condition of road signs. This survey information in turn informs the development of maintenance and renewal schemes.





## CHALLENGE

- **Project:**  
Area 3 Survey
- **Location:**  
Central Southern England
- **Client:**  
Kier PLC.
- **Completion Date:**  
August 2018.

To perform an asset inventory and sign retro-reflectivity testing across the network, without incurring costly traffic management or creating disruption to road users. Traditionally, road signs are surveyed during the daytime, requiring traffic management and hand-held measuring devices, making this method of data collection slow. With the introduction of “smart motorways”, road signs are now being mounted on overhead gantries, or “cantilevered” over the carriageway, which are not straightforward to access or measure by traditional methods. We submitted our AMAC proposal and mobile Road Sign survey system. The survey vehicle has the capability to survey road signs at road speed (up to 70 mph on motorways), measuring the retro-reflectivity of the sign background, it’s legend, it’s gps position, and the sign dimensions and height above the carriageway. In effect, collecting a



full asset inventory of the signs. The AMAC system operates at night, enabling real world accurate data recording, with reduced traffic disruption, and no requirement for traffic management.

## OUR SOLUTION

The survey was undertaken within 4 weeks, with the data subsequently processed off site and submitted / presented to Kier in the agreed format . Kiers highways asset management system is referenced directly to Highways England’s HAPMS (Highways Agency Pavement Management System).

## RESULTS / BENEFITS

We processed and presented the signs data also referenced to HAPMS, which enabled the completed data to be quickly upload into the client’s system.

Analysis tools within AMAC, enable Reports to be interrogated by condition and asset type categories.